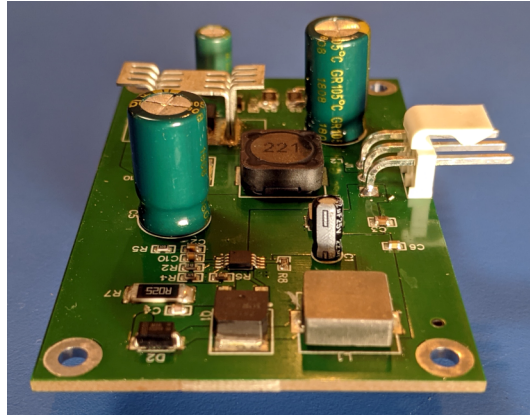


AudioSimplified

Phantom Power Supply

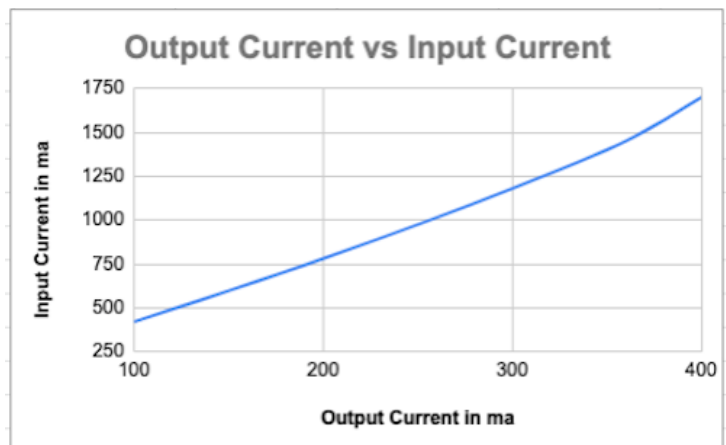


+48v from +15v power supply pcb for console rebuilders/diy

Often needed to add phantom power to consoles or preamps where it is not available, this low noise supply utilizes a switching regulator to boost the voltage and an analog regulator to then smooth out the ripple and silence the noise. The board is capable of driving 25 mic channels at full load (all channels were shorted to ground – 14ma x 25ch = 350ma). The input current graph shows the draw from your +15v supply, ensure that there is enough spare capacity.

Specifications

Input Voltage: 12vdc–24vdc
Output Voltage: 48vdc
Output Current: 350ma
Output Noise+Ripple: 25mv
Size: 80mm x 50mm (3.25" x 2")
Price: \$35.00



©2021 Audio Simplified LLC, Jim Mikles
6401 Hickory Overlook, Columbia, MD 21044
audio-simplified.com 410.999.0918